

CM4KS

Meeting Card

Specification v1.4



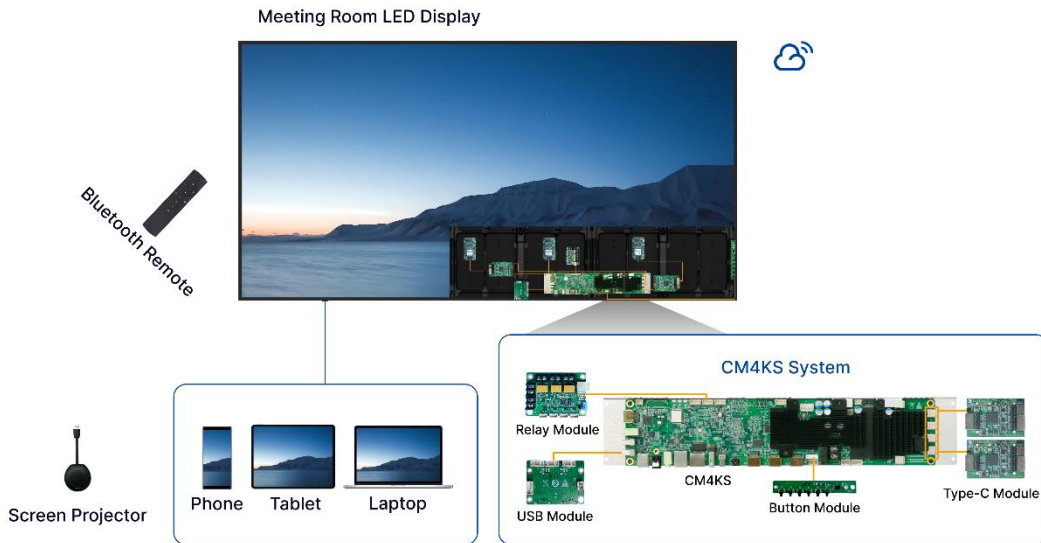
Overview

CM4KS is an all-in-one meeting Card specially designed by Colorlight that integrates the Android system and sending card functions into one unit. It features powerful interaction and playback capabilities. With the Android 13 operating system, CM4KS can run third-party app with smooth operation and robust functionality. It also features wireless screen sharing, whiteboard and annotation, document presentation, infrared touch screen, and conference system. Additionally, it fully supports Colorlight unique image quality enhancement technology, delivering the best display effect to users. Thanks to its ultra-thin and ultra-narrow modular design, CM4KS can be easily integrated into the LED display. It is suitable for various applications such as exhibition halls, lecture halls, conference rooms, and multi-functional classrooms.

Features

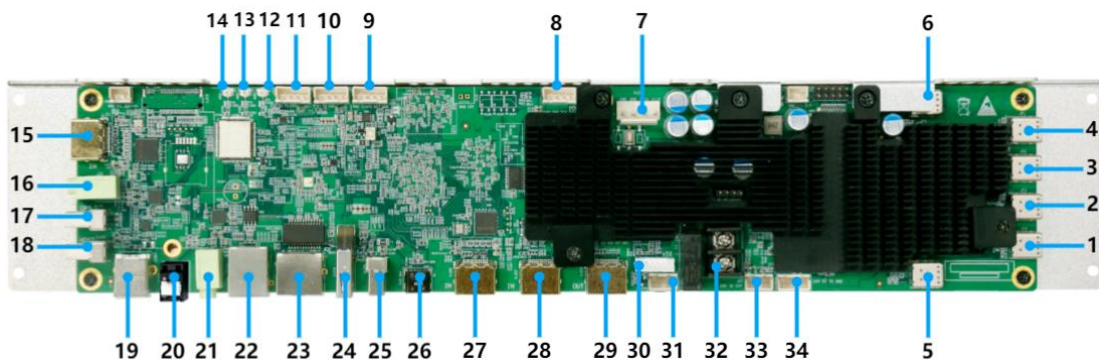
- Equipped with 8-core 8nm advanced process chip with excellent performance.
- Based on the Android 13, supporting third-party APP.
- H.265/H.264/AV1/VP9/AVS2 and other mainstream formats ,8K UHD video decoding and playback.
- Load capacity up to 8.8 million LED pixels, the widest up to 7680 pixels.
- 3x HDMI2.0 inputs, 1x HDMI2.0 output.
- Simultaneous display of multiple signal sources, support to preview.
- HDR10, HDR HLG, and infi-bit technologies for image quality enhancement.
- Support to Edit and playback WORD, PPT, EXCEL documents.
- USB-A and USB-C ports support USB disk, mouse, camera and other peripherals.
- WiFi6 high-speed connection, support AP and STATION mode at the same time.
- Bluetooth 5.2 support Bluetooth remote, mouse, keyboard and other peripherals.
- Infrared touch frame for smooth screen drawing. (Infrared touch frame is optional)
- Wireless screen mirroring from Windows, IOS, Android terminals. Mirror up to 4 terminals simultaneously to the LED display.
- Control the LED screen with a remote
- Low-power mode during standby (<0.5 W), wakeup from standby via remote
- Comment and screenshot capture of external signal such as OPS and PC
- Conference system compatible with mainstream peripherals.
- Support HDMI high-definition cameras.
- Optimized display modes for different scenarios such as document presentation, remote meetings, and video playback.

Application



Hardware

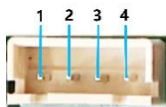
CM4KS

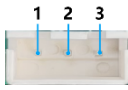
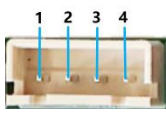



*The product photos in this article are for reference only, please refer to the actual products purchased.

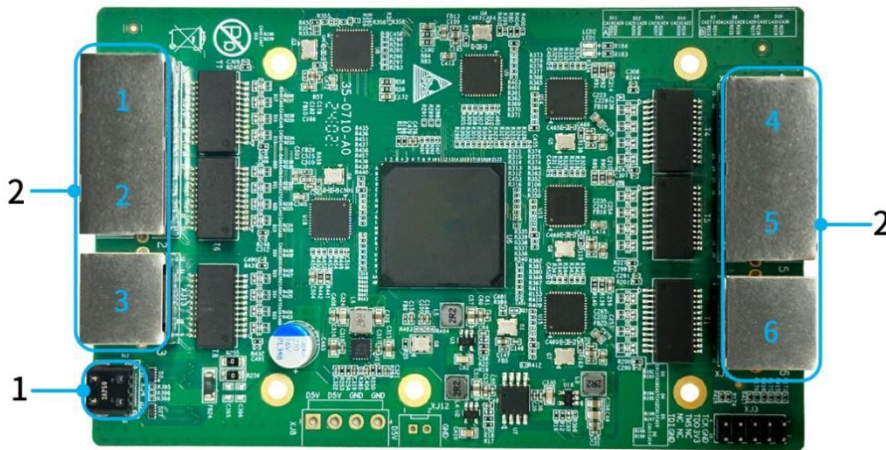
Type	No.	Connector	Function
Input	27,28	HDMI2.0	Connect to an external video input source <ul style="list-style-type: none"> Maximum resolution 3840×2160@60Hz HDCP 1.4, HDCP 2.3 compliant
	15	HDMI2.0	Connect to OPS, achieve dual-system functionality.
Output	1-6	Type-C ¹	Connect to ethernet module, each module has 6 Ethernet ports.

¹ Users must use the Type-C cables supplied with this product to connect the Ethernet modules, and the side with a "T" mark must face upwards.

	29	HDMI2.0	HDMI signal output <ul style="list-style-type: none"> • Maximum resolution 3840×2160@60Hz • HDCP 1.4, HDCP 2.3 compliant
	16,21	AUDIO	3.5mm audio connector
	20	SPDIF	Digital audio output
Control	24/25	USB3.0/USB2.0	USB-A ports support mouse, keyboard, USB disk and other USB devices Supported image formats: jpg, bmp, png Supported video formats: avi, mpg, mov, mkv, mp4, rmvb, flv, ts, vob Supported file formats: exFAT, FAT32, NTFS
	19	USB2.0	USB-B interface, infrared touch frame bypass output, connect to external PC
	18	USB2.0	USB-A port for connecting a USB expansion board
	17	USB2.0	Connect to OPS computer
	26	Type-C	Debugging and setting display parameters
	23	Ethernet Port	Connect to network
	23	SENSOR	RJ11 interface connecting sensor to monitor rightness, smoke, temperature, humidity
	34	Debugging connector	Debugging the Android system.
	10	UART	Connect to relay module for cabinet power management
	13,14	Wi-Fi IPEX	Connect to Wi-Fi antenna.
	12	Bluetooth IPEX	Connect to Bluetooth antenna.
	33	3D connector	3D display with transmitter and glasses
	32	Relay Switch	Power control
	8	USB2.0	Reserve 4PIN USB socket
9	OPS connector	Detect and control power on/off of the OPS computer. Pins are defined as follows: <ul style="list-style-type: none"> • 1: OPS-PWE • 2: OPS-STATE • 3: OPS-DET • 4: GND 	
31	IR socket	Connect the infrared receiver module <ul style="list-style-type: none"> • 1: IR • 2: GND 	

			<ul style="list-style-type: none"> • 3: 3V3 
Accessory	11	RS232	<p>For central control development</p> <ul style="list-style-type: none"> • 1: RX • 2: TX • 3: GND • 4: D5V 
	30	Button connector	<p>volume/brightness adjustment, input source switching, power on/off</p> <ul style="list-style-type: none"> • 1: PWRON • 2: D3V3 • 3: ADC • 4: IR • 5: LED • 6: GND 
Power	7	DC12V	12V 5A input

Ethernet module



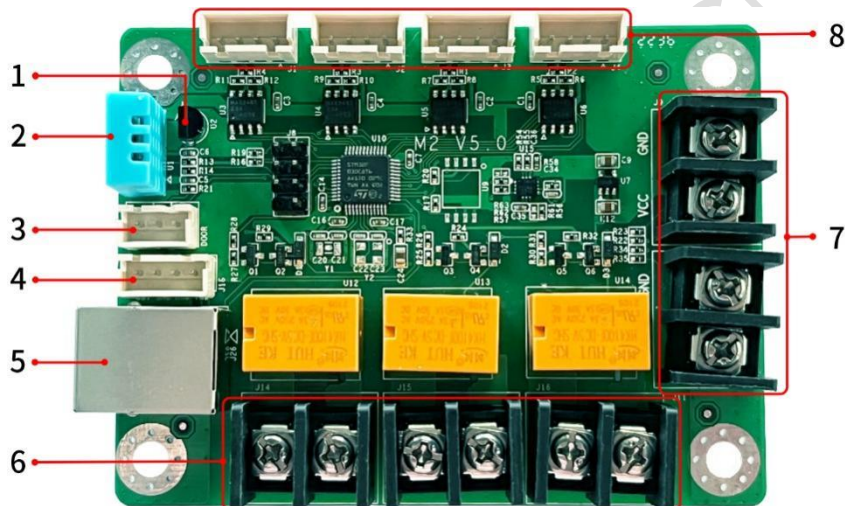
No.	Connector	Function
1	Type-C	Connect to the main board
2	Ethernet	6 Ethernet ports

Button module



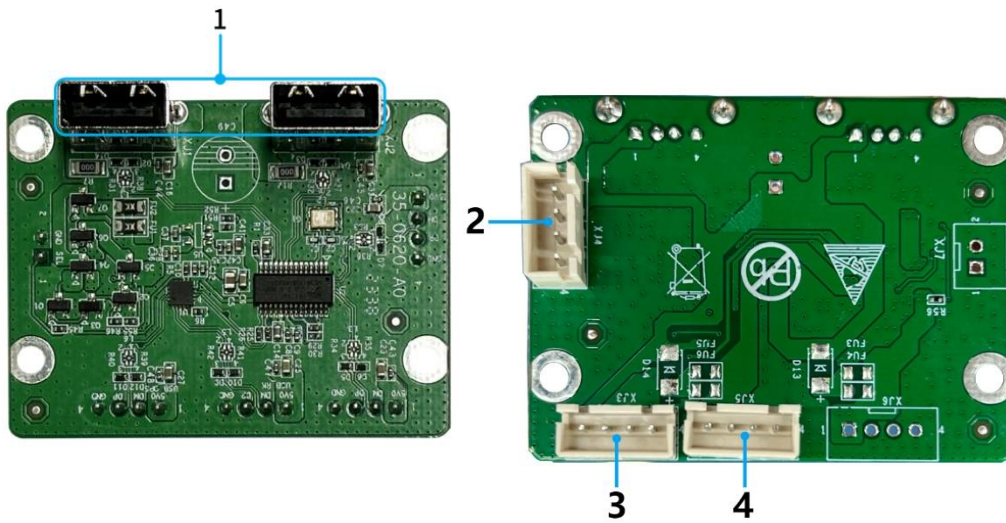
Connector	BRIGHT-	BRIGHT+	VOL-	VOL+	SOURCE	POWER	LED
Function	Decrease brightness	Increase brightness	Decrease volume	Increase volume	Switch video source	Switch on / off	Power indicator

Relay module



No.	Connector	Function
1	Humidity Monitoring	Monitor ambient temperature
2	Temperature Monitoring	Monitor ambient humidity
3	Cabinet door monitoring	Monitor cabinet door status (open/close)
4	4 PIN port	Power supply and communication interface: choose one of two options
5	RJ11 port	
6	Relay control interface	Relay switch control
7	Voltage monitoring	Monitor external voltage, 0~24V
8	External sensors interface	Connect to light sensor, temperature sensor, humidity sensor, noise sensor, etc.

USB module



No.	Connector	Function
1	USB2.0	2x USB-A ports, support for mouse, keyboard, USB flash drive and other USB devices, support for USB flash drive playback
2	USB2.0	Switch to OPS host
3	USB2.0	Reserved
4	USB_RK	Switch to CM4KS

Specifications

Hardware configuration	CPU	Cortex A76 x4 + A55 x4
	GPU	MaliG610 x4
	RAM	8GB LPDDR4
	ROM	128GB eMMC
Electrical parameters	Input Voltage	DC12V
	Maximum Transient Current	5A
	Peak Power Consumption	28W
	System Power	DC12V, 5A
Size	CM4KS	L×W×H /401.0mm×79.95mm×22.0mm
Operating environment	Temperature	-20°C~65°C/-4°F~149°F
	Humidity	10%RH~80%RH, no condensation
Storage environment	Temperature	-25°C~80°C/-13°F~176°F
	Humidity	10%RH~90%RH, no condensation
Packing information	List	<ul style="list-style-type: none"> 1x CM4KS 1x Relay Module, 1x Button Module, 4x

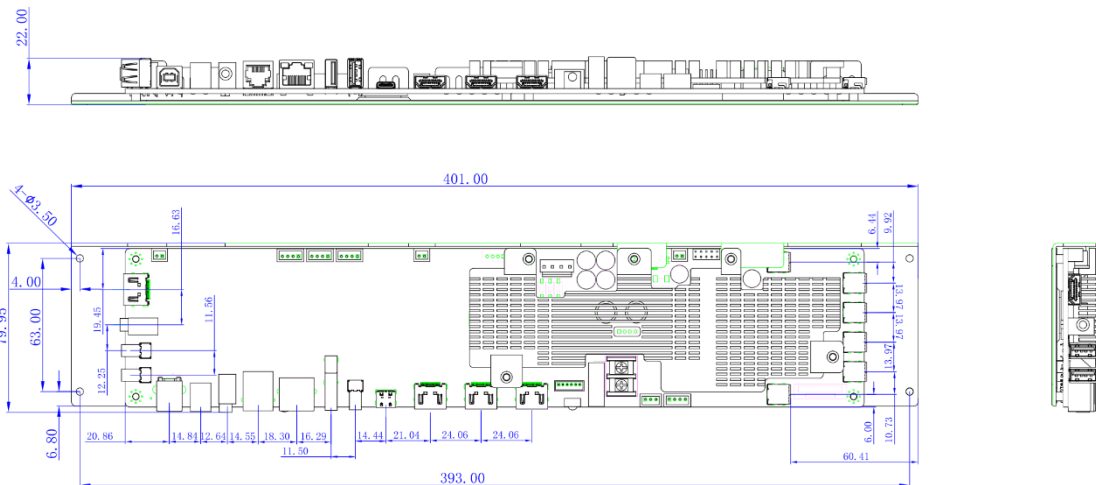
		<p>Ethernet Module, 1x USB HUB</p> <ul style="list-style-type: none"> • 1x Relay Module Cable, 1x Button Cable, 4x Type-C Cable, 1x USB HUB Cable • 3x antennas & feeder cables • 1x Remote Control
--	--	--

* Current and power consumption may vary depending on product settings, environment, usage, and other factors.

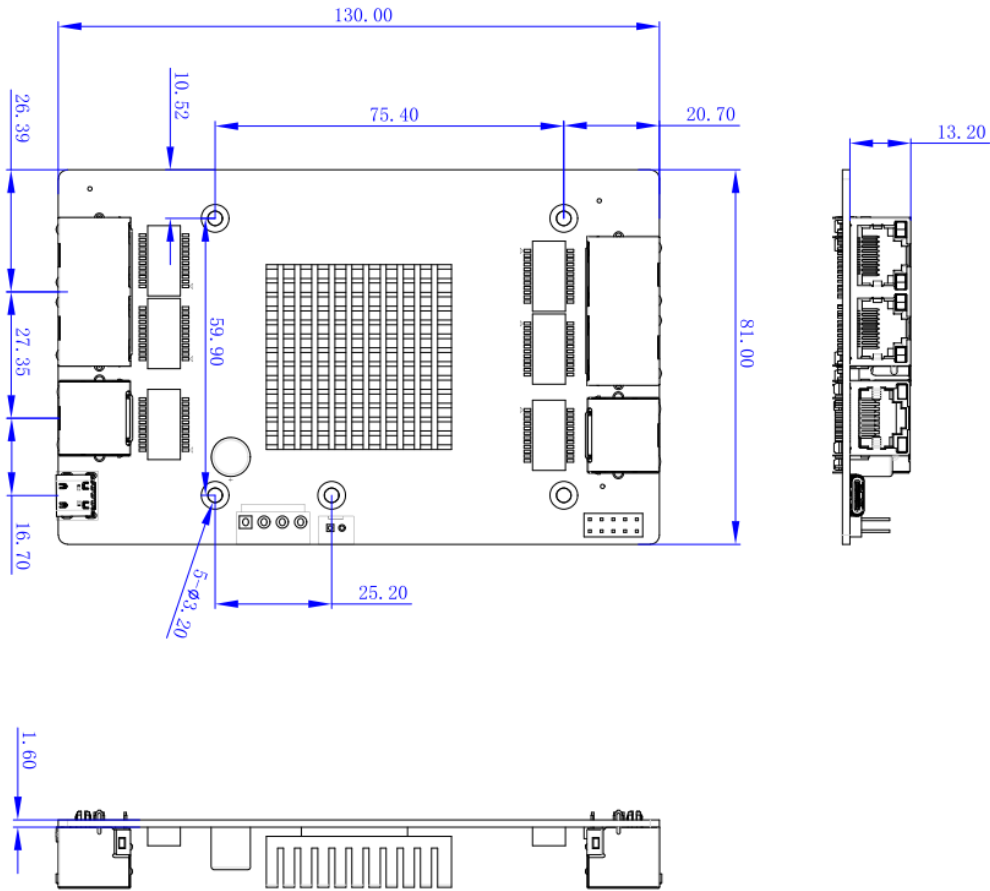
Reference dimensions

Unit: mm

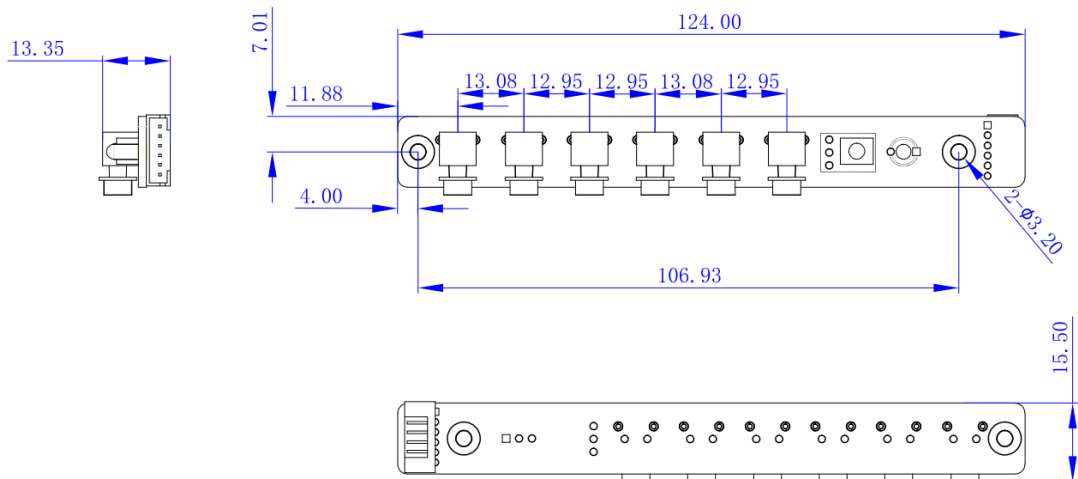
CM4KS



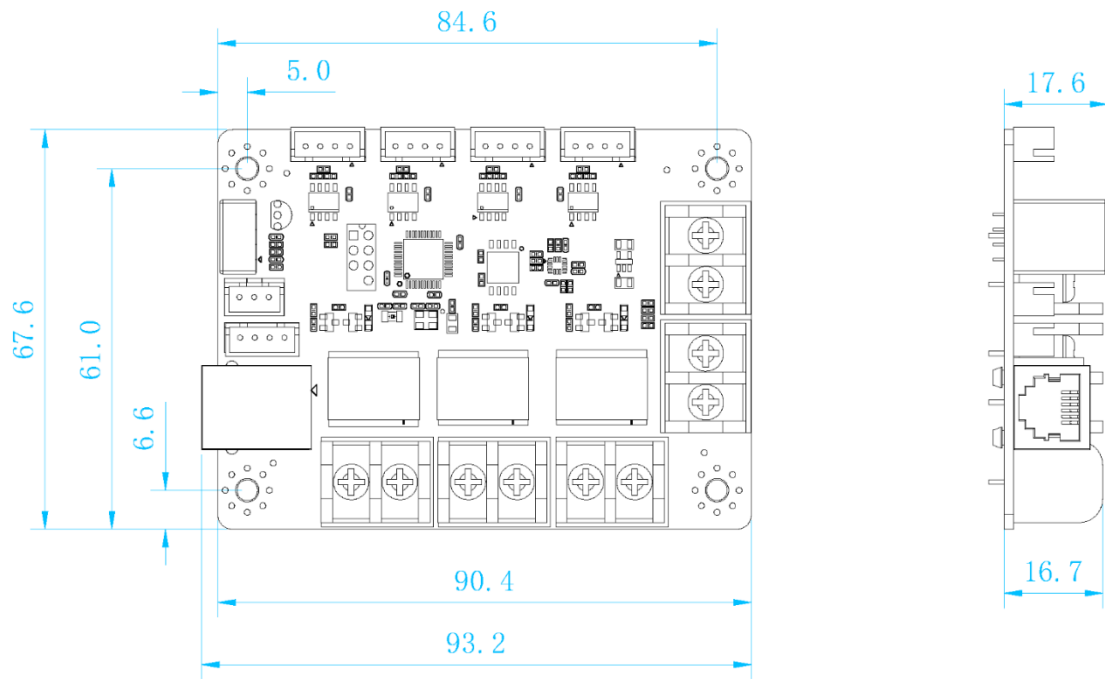
Ethernet Module



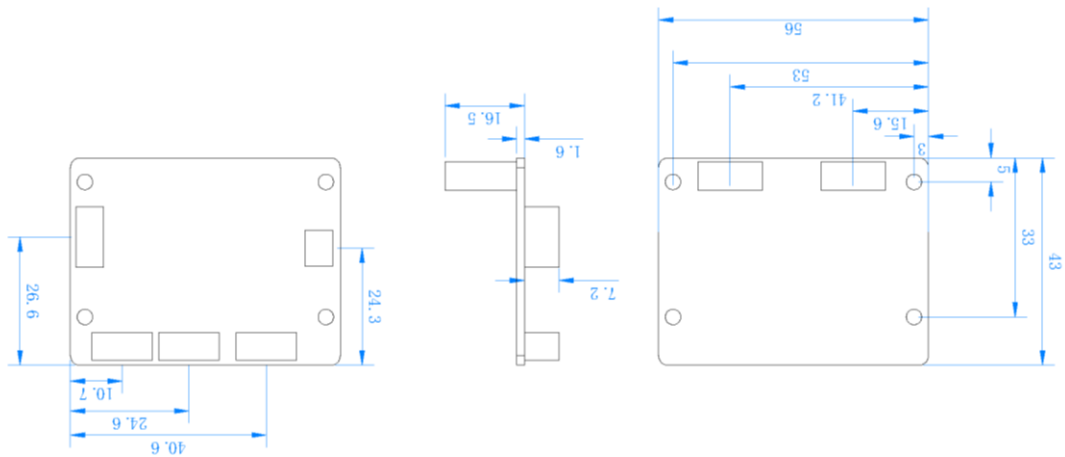
Button Module



Relay Module



USB Module



Statement

Copyright © 2024 Colorlight Cloud Tech Ltd. . All rights reserved.

Without the express written permission of Colorlight Cloud Tech Ltd., no unit or individual may copy, copy, transcribe or translate part or all of the contents of this book. Not to be used for any commercial or profit-making purposes in any form or by any means.

 **Colorlight®** The logo is a registered trademark of Colorlight Cloud Tech Ltd.

Without the written permission of the company or the trademark owner, no unit or individual may in any way or for any reason use, reproduce, modify, disseminate, transcribe or infringe all or any part of the above-mentioned trademark, nor may it be bundled with other products. Use sales.

As factors such as product batches and production processes may change, in order to provide accurate product information, specification parameters, and product characteristics in order to match the actual product, the text description and picture effects in the document will be adjusted and revised appropriately. If it is necessary to carry out the above modification and adjustment without prior notice, please refer to the actual product.

Welcome to choose to use the products of Colorlight Cloud Tech Ltd. If you have any questions or suggestions in use, please contact us through official channels, we will try our best to support and listen to your valuable suggestions. For more information and updates, please visit the official website www.colorlightinside.com or scan the QR code.

Service Phone

4008 770 775

Colorlight Cloud Tech Ltd

Official Website: www.colorlightinside.com

Head Office Address: Room 37F-39F, Building 8, Zone A,
Shenzhen International Innovation Valley, Vanke Cloud City,
Nanshan District, Shenzhen, China

